

# TJC & CMS Infection Prevention & Control Overview

## Program Overview

The surveys for 2018-2019 have been early based on Medicare's desire to surprise healthcare organizations. Continuous readiness becomes a must in this environment. Let Judith M. Atkins, RN, MSN share with you feedback and implications for Infection Practitioners and their staff and Committee Members. You will gain an understanding of The Joint Commission, Center's for Medicare/Medicaid Services, and Center's for Disease Control's approach to Infection Control and Prevention.

## Program Topics

1. The Joint Commission's approach to Infection, Prevention and Control 2018/2019 in applicable standards.
2. Operative and Invasive Procedural Areas: Infection Control Implications.
3. The Centers for Medicare and Medicaid Services (CMS) and Center's for Disease Control (CDC)'s impact on Infection Prevention and Control survey process.
4. Top findings for The Joint Commission and Center's for Medicare/Medicaid Services/Center's for Disease Control.

## Program Objectives

At the completion of this program the participants will be able to:

1. Describe the 2019 Joint Commission Infection Prevention and Control process for surveys.
2. List new implications for Operative and Invasive Procedural Areas.
3. List the steps in the survey process for CMS and CDC in 2018/2019.
4. List the top two findings for TJC, CMS, and CDC.

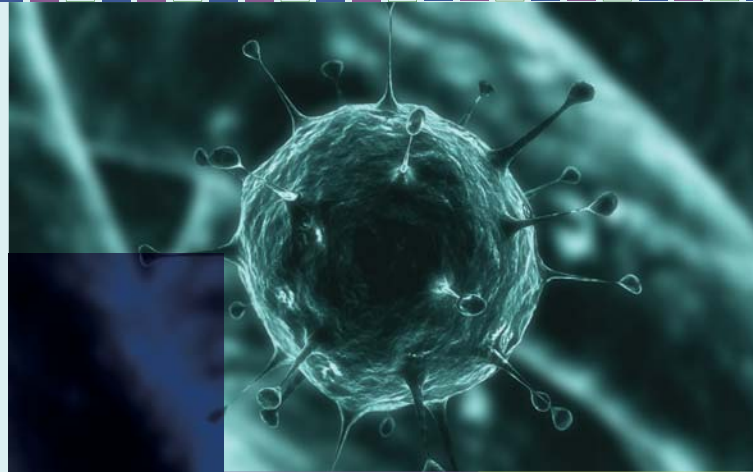
## About the Speaker

Judith M. Atkins, RN, MSN, President and CEO McKenna Consulting, has over 20 years of experience as a public speaker and consultant to health care professionals. Hundreds of healthcare organizations, nationally and internationally, have participated in the McKenna System while preparing for a Joint Commission review. These healthcare organizations have done well in the area of compliance with The Joint Commission and Centers for Medicare and Medicaid. Judith has taught Infection Control to various APIC state groups to assist them in understanding the requirements in the field of Infection Prevention and Control. She also assisted the government in the evaluation of Joint Commission's ability to meet Medicare's deemed status requirements.

## Who Should Attend

The Joint Commission/CMS Coordinator; Chief Nurse Executive; Infection Control Practitioners & members of the Infection Control Committee; Performance Improvement Coordinator & Staff; Department Managers responsible for Infection Prevention & Control; & Staff from Nursing & Ancillaries. Staff from anywhere doing high level disinfecting & sterilization will benefit from this program. Departments usually include; Imaging, Provider Based Practices (especially urology); OR and Central Sterile; Endoscopy and Anesthesia. Facilities staff will benefit from ventilation, temperature and humidity discussion.

This educational activity is jointly provided by AXIS Medical Education & MHEI.



## DATE/TIME

Thursday, March 28, 2019

8:30 AM –4:00 PM

Registration and Continental Breakfast begin at 8:00 AM

REGISTER NOW

## LOCATION

Maryland Hospital Association

Pierson Conference Center  
6820 Deerpath Road  
Elkridge, MD 21075

## PROGRAM FEE

Early Bird Member Discount \$249  
(Register & Pay by February 28, 2019)

MHEI Member: \$349 (After February 28, 2019)

Non-Member: \$499

## REGISTER

To register, please visit [MHEI.org](http://MHEI.org).



maryland healthcare  
education institute  
6820 Deerpath Rd.,  
Elkridge MD 21075  
410.796.6239 (p)  
[www.mhei.org](http://www.mhei.org)

# TJC & CMS Infection Prevention & Control Overview

(continued)

## CONTINUING EDUCATION

### Accreditation Statement



In support of improving patient care, this activity has been planned and implemented by AXIS Medical Education and MHEI. AXIS Medical Education is jointly accredited by the Accreditation Council for Continuing Medical Education (ACCME), the Accreditation Council for Pharmacy Education (ACPE), and the American Nurses Credentialing Center (ANCC), to provide continuing education for the healthcare team.

### Credit Designation for Nursing

AXIS Medical Education designates this continuing nursing education activity for 6.0 contact hours.

Learners are advised that accredited status does not imply endorsement by the provider or ANCC of any commercial products displayed in conjunction with an activity.

### Quality Professionals

This program is pending approval by the National Association for Healthcare Quality (NAHQ) to provide CPHQ CE credit.

### AXIS Contact Information

For information about the accreditation of this program please contact AXIS at 954-281-7524 or [info@axismeded.org](mailto:info@axismeded.org).

### Disclosure of Conflicts of Interest

AXIS Medical Education requires instructors, planners, managers and other individuals and their spouse/life partner who are in a position to control the content of this activity to disclose any real or apparent conflict of interest they may have as related to the content of this activity. All identified conflicts of interest are thoroughly vetted by AXIS for fair balance, scientific objectivity of studies mentioned in the materials or used as the basis for content, and appropriateness of patient care recommendations.

The faculty reported the following financial relationships or relationships they or their spouse/life partner have with commercial interests related to the content of this continuing education activity:

Name of Faculty or Presenter	Reported Financial Relationship
Judith M. Atkins, RN, MSN	Nothing to disclose

The planners and managers reported the following financial relationships or relationships they or their spouse/life partner have with commercial interests related to the content of this continuing education activity:

Name of Planner or Manager	Reported Financial Relationship
Dee Morgillo, MEd, CHCP	Nothing to disclose
Holly M. Hampe, D.Sc., RN, MHA, MRM	Nothing to disclose
Kelly Yost	Nothing to disclose
Judith M. Atkins, RN, MSN	Nothing to disclose

### Disclaimer

Participants have an implied responsibility to use the newly acquired information to enhance patient outcomes and their own professional development. The information presented in this activity is not meant to serve as a guideline for patient management. Any procedures, medications, or other courses of diagnosis or treatment discussed in this activity should not be used by clinicians without evaluation of patient conditions and possible contraindications on dangers in use, review of any applicable manufacturer's product information, and comparison with recommendations of other authorities.

### Americans with Disabilities Act

In compliance with the Americans with Disabilities Act, we will make every reasonable effort to accommodate your request. For any special requests, please contact MHEI at 410-796-6239 the meeting dates.

### Requirements for credit:

- Attend/participate in the educational activity and review all course materials.
- Complete the CE Declaration form online by 11:59 pm ET April 11, 2019. Instructions will be provided. If you do not enter the online portal by the above date, you will not be able to retrieve your statement of participation.
- Upon successful completion of the online form, your statement of completion will be presented to you to print.