

TJC & CMS Infection Prevention & Control Overview

Program Overview

The Centers for Medicare and Medicaid Services (CMS) have finalized the Infection Control worksheets. They have been condensed and reorganized. The content continues to drive the survey process for the independent regulators. This program will help you understand how The Joint Commission and the Centers for Medicare and Medicaid Services (CMS) surveyors assess compliance with the critical Infection Control standards. Feedback from actual surveys will form the basis of all discussion. You will be able to understand how regulators operationalize their interpretation during surveys. This would be a great program for your staff in Infection Prevention. Being a prophet in your own land is difficult.

Program Topics

1. 2016 Joint Commission Standards – Infection Prevention and Control.
2. 2016 Joint Commission National Patient Safety Goals related to Infection Prevention and Control.
3. Collaboration between Environment of Care and Infection Control.
4. CMS' finalized worksheets related to Infection Control.
5. Pressure gradients and air exchanges relating to Infection Prevention and Control.
6. Tissue Management.
7. Strategies for Operationalizing Infection Prevention & Control and the Environment of Care into day to day operations based on surveyor's interpretation.

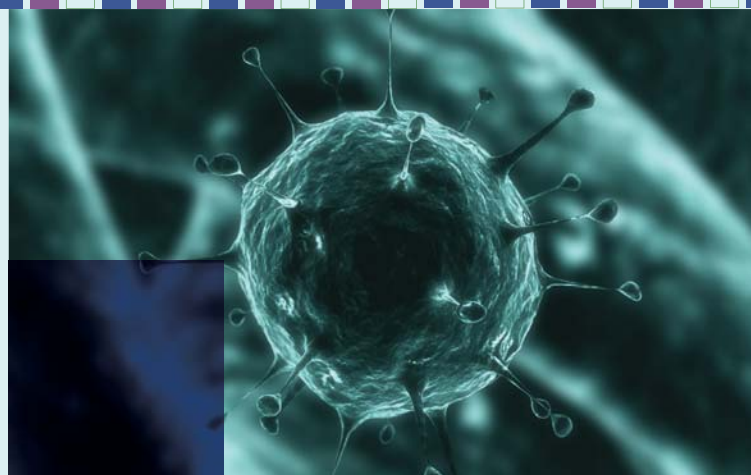
Program Objectives

1. Describe the 2016 Joint Commission Infection Prevention and Control process for surveys.
2. List the Infection Prevention and Control National Patient Safety Goals for The Joint Commission.
3. List the Environment of Care Joint Commission standards impacting Infection Prevention and Control.
4. Explain the purpose of the Infection Control worksheets for CMS.
5. List one reference for pressure gradients and air exchanges.
6. Define tissue management.
7. List two strategies to Operationalize Infection Prevention and Control and Environment of Care based on surveyor's interpretation.

About the Speaker

Judith Atkins, RN, MSN, President & CEO, McKenna Consulting
Judith has over 20 years of experience as a public speaker & consultant to health care professionals. Over 600 hospitals, nationally and internationally,

This educational activity is jointly provided by AXIS Medical Education and MHEI.



DATE/TIME

Tuesday, May 10, 2016

8:30 AM – 3:30 PM

Registration and Continental
Breakfast begin at 8:00 AM

REGISTER
NOW

LOCATION

Maryland Hospital Association
Pierson Conference Center
6820 Deerpath Road
Elkridge, MD 21075

PROGRAM FEE

Early Bird Member Discount \$249
(Register & Pay by April 4, 2016)

MHEI Member: \$349 (After April 4, 2016)

Non-Member: \$499

REGISTER

To register, please visit MHEI.org.

Who Should Attend:

The Joint Commission/CMS Coordinator; Chief Nurse Executive; Infection Control Practitioners & members of the Infection Control Committee; Performance Improvement Coordinator & Staff; Department Managers responsible for Infection Prevention and Control; & Staff from Nursing and Ancillaries.



maryland healthcare
education institute
6820 Deerpath Rd.,
Elkridge MD 21075
410.796.6239 (p)
www.mhei.org

TJC & CMS Infection Prevention & Control Overview

(continued)

have participated in the McKenna System while preparing for a Joint Commission review and have an important advantage in staying up-to-date with new policies and management issues, growth potential, and maintaining their reputations as high quality healthcare facilities.

CONTINUING EDUCATION

Accreditation Statement

This activity is planned and implemented by AXIS Medical Education and (insert joint provider name). AXIS Medical Education is accredited by the Accreditation Council for Continuing Medical Education (ACCME), the Accreditation Council for Pharmacy Education (ACPE), and the American Nurses Credentialing Center (ANCC) to provide continuing education for the healthcare team.

Credit Designation for Nursing

AXIS Medical Education designates this continuing nursing education activity for 5.5 contact hours.

Learners are advised that accredited status does not imply endorsement by the provider or ANCC of any commercial products displayed in conjunction with an activity.

Quality Professionals

This program is pending approval by the National Association for Healthcare Quality (NAHQ) to provide CPHQ CE credit.

Risk Managers

This program has been approved for a total of 5.5 contact hours of continuing education credit toward fulfillment of the requirements of ASHRM designations of fellow (FASHRM) and distinguished fellow (DFASHRM) and towards certified professional in healthcare risk management (CPHRM) renewal.

AXIS Contact Information

For information about the accreditation of this program please contact AXIS at 954-281-7524 or info@axismeded.org.

DISCLOSURE OF CONFLICTS OF INTEREST

AXIS Medical Education requires instructors, planners, managers and other individuals and their spouse/life partner who are in a position to control the content of this activity to disclose any real or apparent conflict of interest they may have as related to the content of this activity. All identified conflicts of interest are thoroughly vetted by AXIS for fair balance, scientific objectivity of studies mentioned in the materials or used as the basis for content, and appropriateness of patient care recommendations.

The faculty reported the following financial relationships or relationships they or their spouse/life partner have with commercial interests related to the content of this continuing education activity:

Name of Faculty or Presenter	Reported Financial Relationship
Judith M. Atkins, RN, MSN	Nothing to Disclose

The planners and managers reported the following financial relationships or relationships they or their spouse/life partner have with commercial interests related to the content of this continuing education activity:

Name of Planners	Reported Financial Relationship
Dee Morgillo, MEd., CHCP	Nothing to disclose
Alison Burrows	Nothing to disclose
Kelly Heacock	Nothing to disclose
Holly M. Hampe, D.Sc., RN, MHA, MRM	Nothing to disclose

DISCLAIMER

Participants have an implied responsibility to use the newly acquired information to enhance patient outcomes and their own professional development. The information presented in this activity is not meant to serve as a guideline for patient management. Any procedures, medications, or other courses of diagnosis or treatment discussed in this activity should not be used by clinicians without evaluation of patient conditions and possible contraindications on dangers in use, review of any applicable manufacturer's product information, and comparison with recommendations of other authorities.

AMERICANS WITH DISABILITIES ACT

In compliance with the Americans with Disabilities Act, we will make every reasonable effort to accommodate your request. For any special requests, please contact MHEI at 410-796-6239 before the meeting dates.

Requirements for credit:

- Attend/participate in the educational activity and review all course materials.
- Complete the CE Declaration form online by 11:59 pm ET May 24, 2016. Instructions will be provided. If you do not enter the online portal by the above date, you will not be able to retrieve your statement of participation.
- Upon successful completion of the online form, your statement of completion will be presented to you to print.



maryland healthcare
education institute
6820 Deerpath Rd.,
Elkridge MD 21075
410.796.6239 (p)
www.mhei.org